

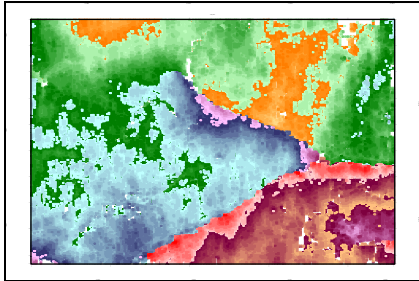


# Structural And Stratigraphic Styles of Hydrocarbon Reservoirs: How They Affect Various 3D Seismic Attributes

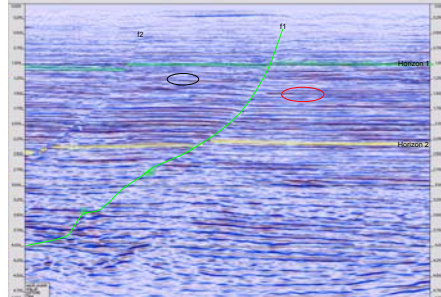
Sean Lewis  
Allied Geophysical Laboratories, University of Houston



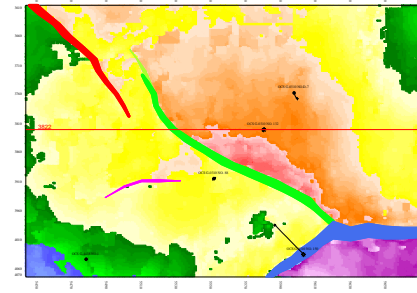
Horizon 1 (h1) Time Structure



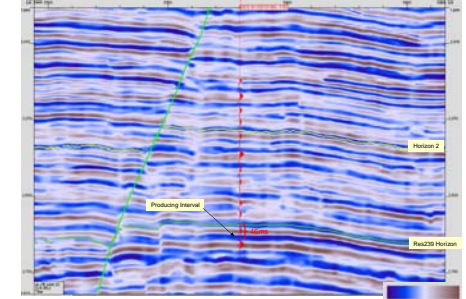
Inline 5580 mig\_all volume



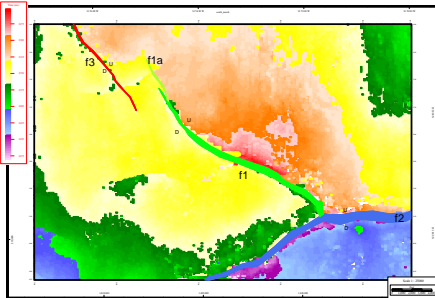
Res239 Time Structure Map



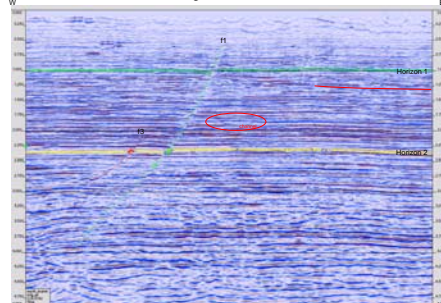
crossline 3822 through the 132 well with synthetic posted (pc\_fill\_near\_02 volume)



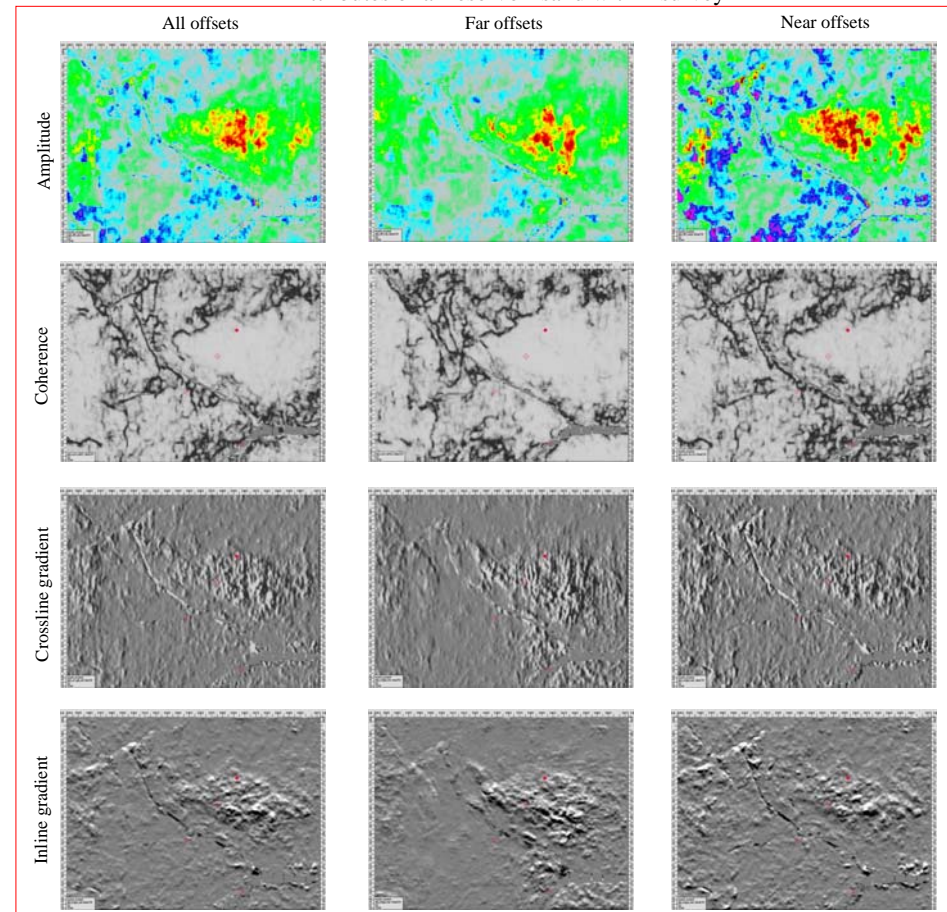
Horizon 2 (h2) Time Structure



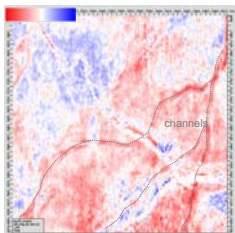
Crossline 3740 mig\_all volume



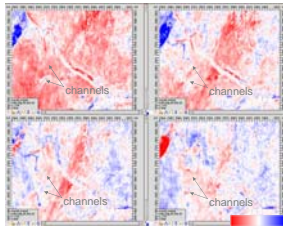
## Attributes of a Reservoir sand within survey



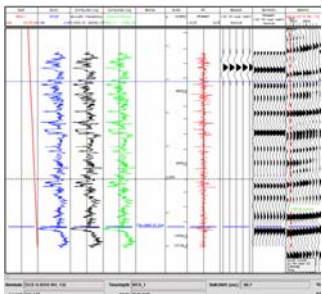
46 ms above Horizon 2 (sbl\_mig\_all\_flat\_h2)



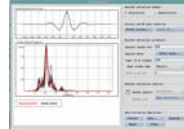
138ms to 120 ms above Horizon 2 (sbl\_mig\_all\_flat\_h2)



Extracted Statistical Wavelet applied to the 132



Statistical Wavelet Extraction



Deterministic Wavelet extraction

